



# NüsingWall Premium 100

for the flexible use of space.

Nüsing – movable wall technology

# More room - more possibilities.



## Flexible connections: mobile dividing walls.

A Mobile dividing wall makes more of your space. It allows the functional and flexible partitioning into several areas - adjust individually according to your particular requirements.

A conference room for 100 persons becomes two spaces - one for 70 persons and one for 30. A large concert hall becomes one medium-sized and two small ones - for undisturbed events taking place simultaneously. A lounge becomes a dining hall with buffet room - and within a few minutes back to a lounge. Just as you like it, very uncomplicated, quick and very easy.



The possibilities are unlimited - as is the functionality: A NüsingWall Premium 100 combines the advantages of modern mobile dividing wall technologies with the highest expectations with respect to, architecture and aesthetics, acoustic and sound insulation, fire and smoke protection. A NüsingWall Premium 100 in addition helps to save construction and energy costs intelligently. Definitely.

Make more of your rooms - with a NüsingWall Premium 100.

# Open for your wishes.



## Our surfaces: your choice.

Not only is each of our mobile wall solutions adapted to your wishes with respect to its functionality, but also with regard to design we offer you the most varied possibilities to integrate your dividing wall individually to the particular room concept - with a large range of different surfaces.

The wall surfaces can for example be adapted to the other walls in the room - in general every wall covering material available can be used. Whether artificial surface, wallpaper, foil, mirror, fabric or carpet, you just choose together with your interior designer the suitable solution and we make it become real.

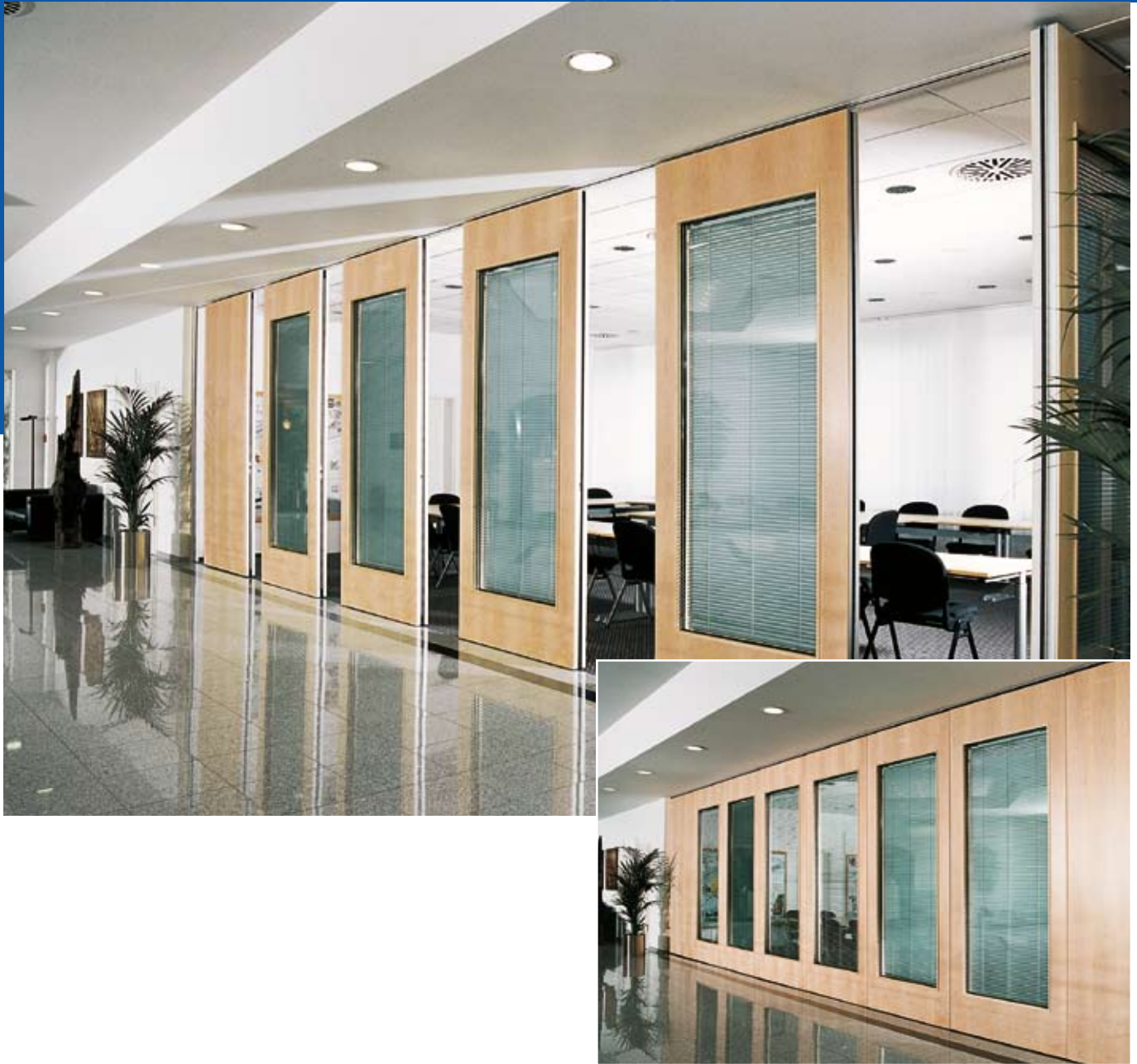


Alternatively design your mobile dividing wall as a contrasting surface - for example choosing a genuine wood veneer which can simply be varnished, stained, or painted.

A large range of "Custom Finishes," are also available on request. Making your wall an eye-catcher.



# Perfect in style and function.



## Our offer to your liking.

Nüsing doesn't offer pre-confectioned inflexible standard solutions - we are specialized in executing each project according to the individual ideas of our customers.

You desire especially adapted glass cutouts in your wall elements? This in combination with integral blinds?

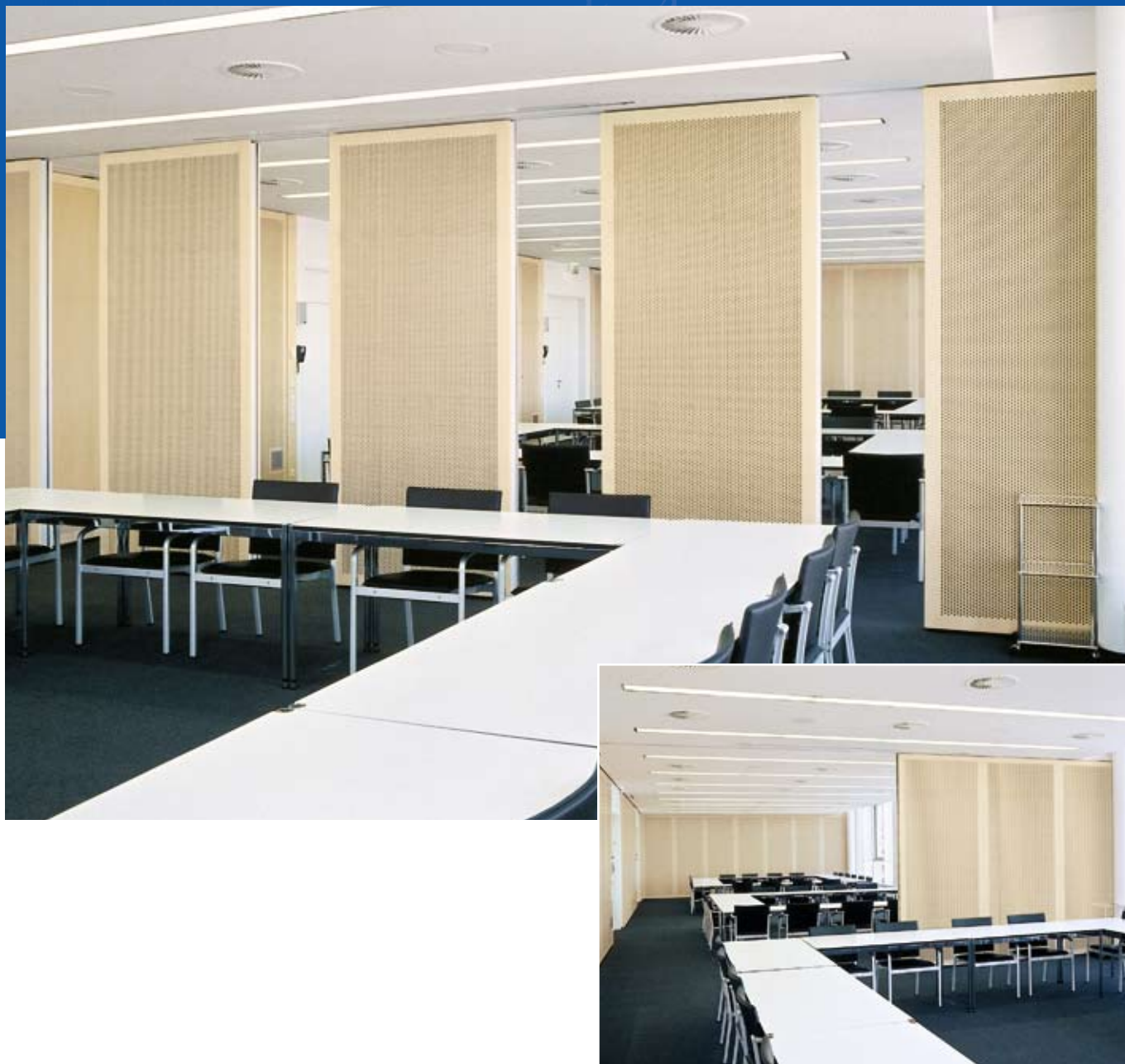
You require a design according to the corporate identity design of your company? You already have a clear idea of how the surfaces of your mobile dividing wall shall look like? Perhaps you still need a place-saving parking concept for your dividing wall solution?



Just talk to us. We will build your desired dividing wall for you - according to all rules of the modern cabinetmaker's trade. Because real effective room solutions are only developed when experience, competence and creativity are ideally combined.



For highly frequented rooms.



### **Our know-how: your sound insulation and room acoustics.**

No matter if the concerns are for a particularly effective sound insulation or the specific improvement of your room acoustics - Nüsing is your partner for successful and certified solutions. You can always count on our competence.

#### **Sound insulation / noise control**

High sound insulation values make Nüsing the market leader. Our dividing wall elements are certified in accordance with the latest sound insulation standard DIN EN 20140-3. We achieve sound insulation values of  $R_w$ , 48 - 59dB. In cooperation with our experienced sound insulation specialists we develop your solution which matches your room utilization concept. We have already been able to achieve insulation values of our movable walls of  $R_w$  54 dB in-situ, installed on site.



### Room acoustic

The perforated, slotted or fabric Nüsing acoustic panels can be easily incorporated into your room design and are available in the most varied designs. The test results quoted in our special brochure are according to the specified panel thickness. Our qualified experts for room acoustics are willing to inform you personally and in detail on this subject.

### Sound insulation in combination with acoustic absorption.

The combination of sound insulation and acoustic absorption panels on our dividing wall elements require a special wall construction as the vibration behaviour is completely changed. We have faced this challenge and certified this combination. In the process excellent values of up to  $R_w, P 59 \text{ dB}$  could be achieved.

We take care that your room is not only pretty impressive - but also acoustically satisfactory.



# Systematically protected.



## Our technology: your safety.

Every three minutes a fire occurs in Germany. How fatal its dimension is, largely depends on the preventive measures in place in the building. Nüsing movable walls are available in special protection designs which make an effective contribution to smoke and fire protection - and can therefore save lives.

Smoke, in case of fire is the greatest danger - if it can spread out quickly it interferes with the respiration of the people inside the building, causes bad visibility conditions and thereby hinders the fire fighting and rescue work. A NüsingWall Premium 100 and Protect 115 offer smoke protection according to DIN 18095, by default. The spread of smoke is reliably prevented.





In the design of NüsingWall Protect 115 we offer up to 60 minutes of fire resistance - including smoke protection - when the wall is closed. Naturally this wall is certified and approved by the building authorities according to the building standard tests.

Ask us about the smoke and fire protection possibilities with the NüsingWall - we will certainly inform you competently.

# Nüsing EASYmatic® : All easily under control.



## Our concept: your comfort

The most intelligent movable wall concepts are of little use if their handling becomes an annoyance to its user. Mobile dividing walls by Nüsing are characterized by very easy and light handling - therefore they can quickly and straightforwardly display their high functionality in every situation.

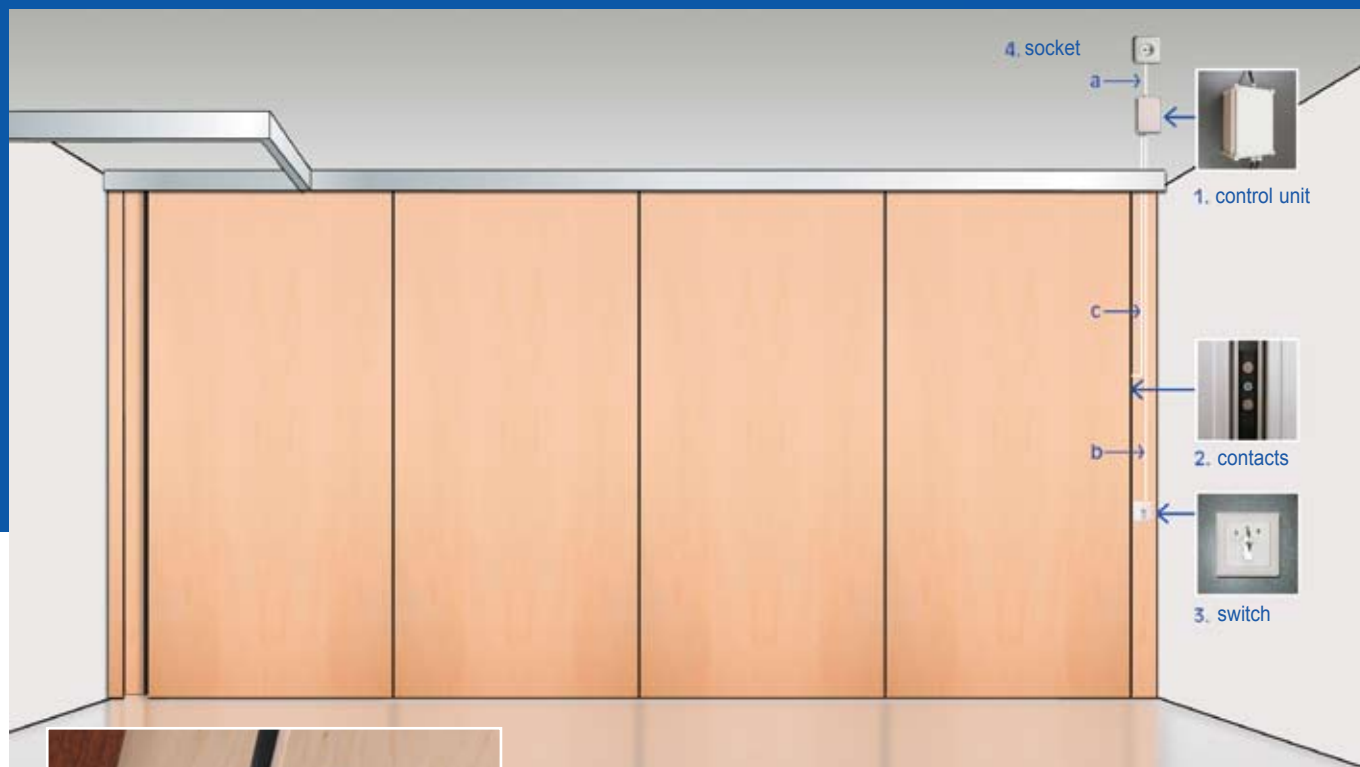
As every Nüsing Premium 100 is a customization, all elements can always be moved and relocated in their entirety.

Nüsing has developed a new semi-automatic operating system for the top product NüsingWall Premium 100: Nüsing EASYmatic®.

The Nüsing EASYmatic® offers with its intelligently devised guide rail and trolley system high convenience for the operator when moving the dividing walls.



# Nüsing EASYmatic®: Automatically increased comfort.



## Simple, secure, and easy to handle:

The Nüsing EASYmatic® electrically extends and retracts the upper and lower pressure door seals within 4 seconds.

An integrated microprocessor control ensures a contact pressure of 2000 N / running meter - which makes the requirement for ground locks in the floor area obsolete.

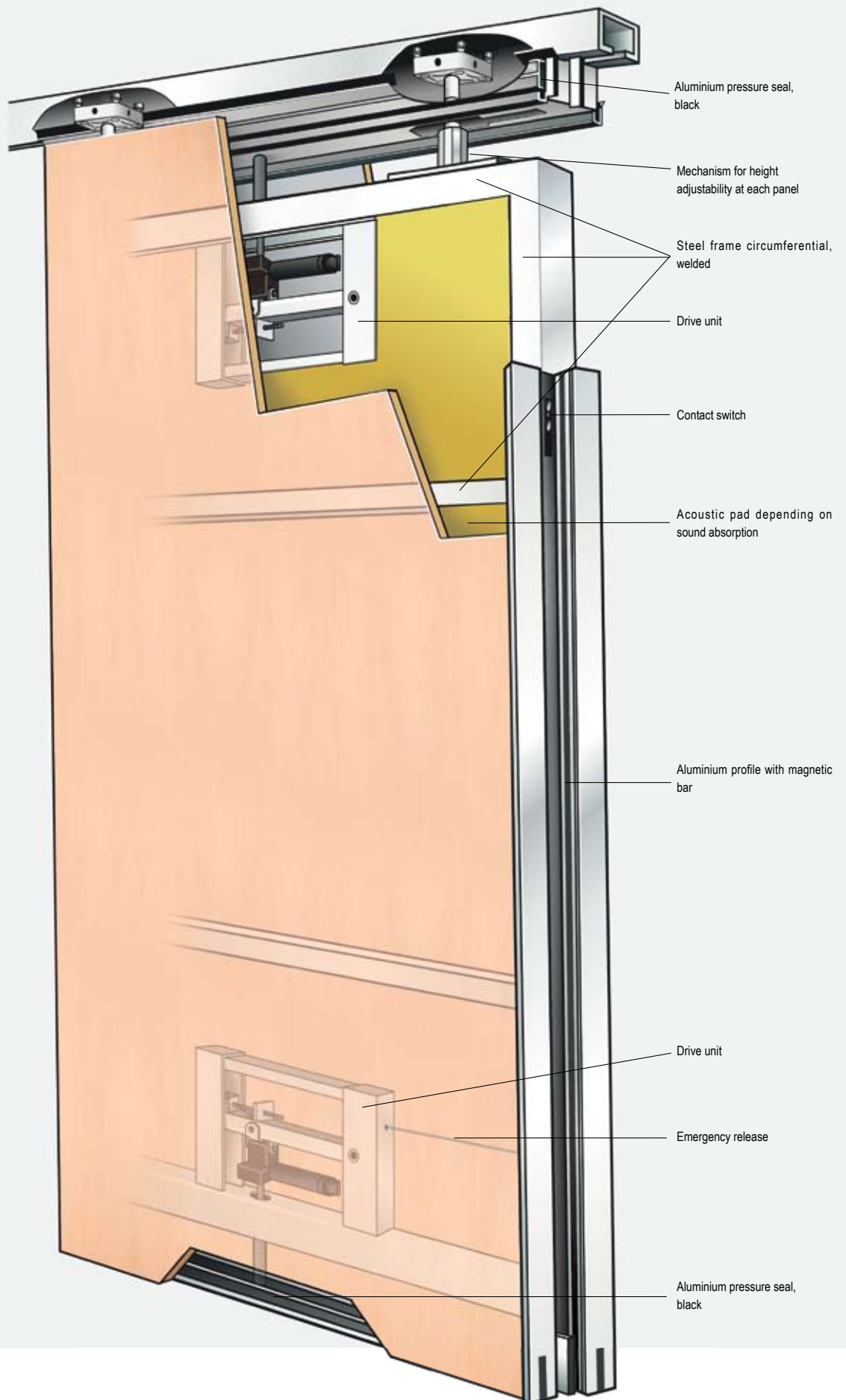
The automatic draw mechanism between the elements makes the assured, easy and precise handling of the dividing wall possible. The secure power transmission between the elements is realized via spring bedded, frontal contact switches.

In order to make handling at ALL times available, the battery included in delivery guarantees, in case of loss of mains power, the handling of the dividing wall.

Nüsing EASYmatic® is a plug-in system and is connected to the electric circuit via a conventional earth contact type plug. In order to avoid the unauthorized handling of your EASYmatic®, access to the dividing wall is restricted by a key-operated switch included in delivery.

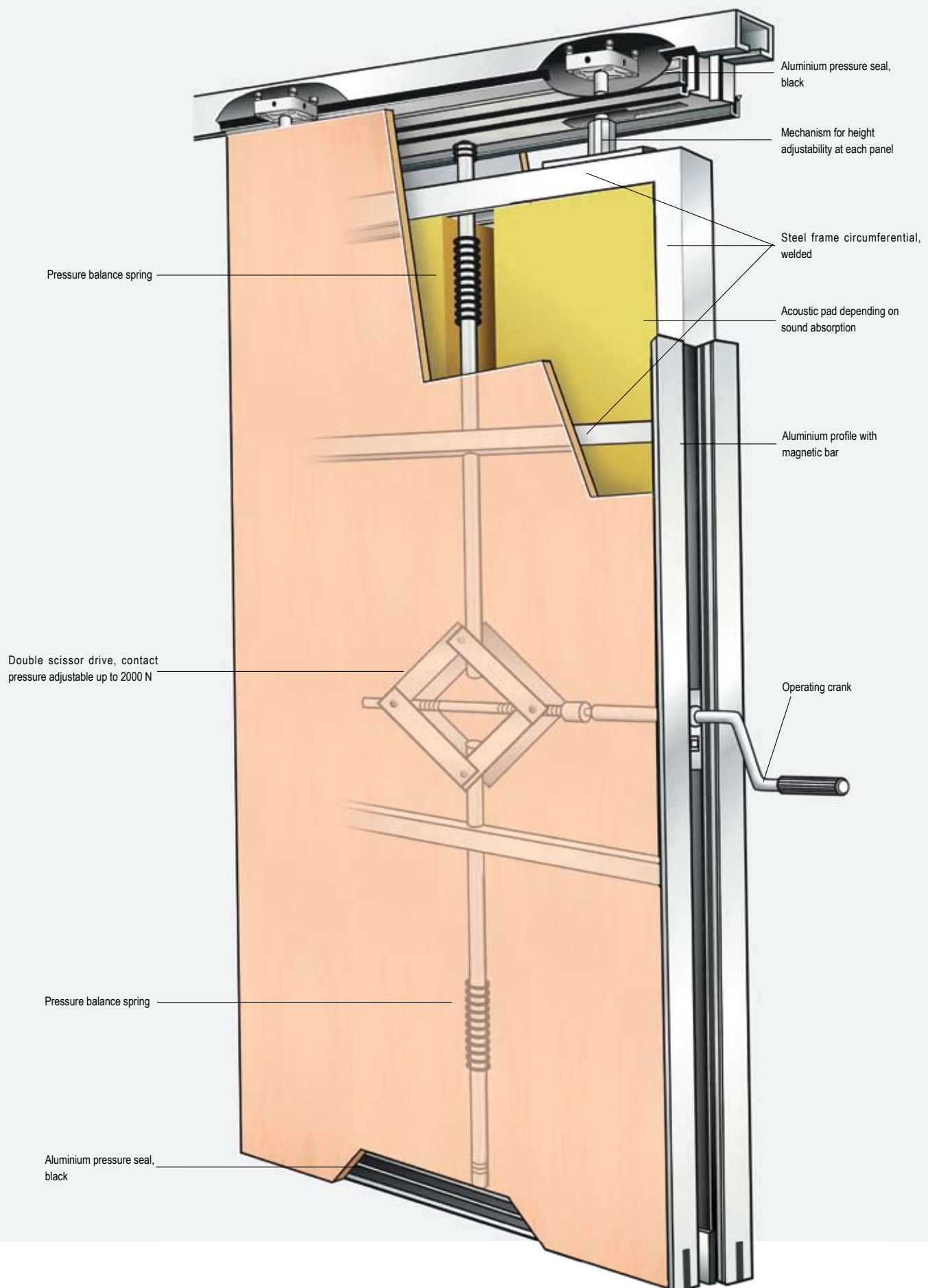


# NüsingWall Premium 100 EASYmatic®





# Nüsing Wall Premium 100



# Functional Details

## NüsingWall Premium 100

**Element thickness:** 100 mm

**Covering:** 16 mm, quality chipboard E1/V20

Boards replaceable in situ

Special designs:

B1-cover boards = self extinguishing

A2-cover boards = incombustible

B1-surfaces

B1-veneer = veneer generally approved by  
the building authorities  
No. P-3083/6099 MPA BS

**Frame:** Circumferential, welded steel frame

**Surfaces:** according to client's choice

**Sound absorption DIN 20140-3:**

Rw P 41, 46, 49, 52, 55, 57, 59 dB

(at 59 dB element thickness 120 mm)

**Smoke protection:** in closed and tensed state certified  
following DIN 18095-2

Leak rate per running meter joint like single-leaf door

**Element connection:**

Aluminium dip profiles E6/EV 1 Aluminium natural anodized  
(tongue - groove), with magnetic connection 70 N/m

**Pressure seal:**

Per element one upper and lower aluminium pressure  
seal with special sealing and sound absorption inlays

**Contact pressure:** adjustable to 2000 N/running meter

**Optional handling:**

**Manual:** with removable crank handle, at about 3 rotations  
maximum pressurization

**EASYmatic®:** electronically-controlled retraction and  
extension of the apex seals

**Fully automated:** by request

**Height adjustment:**

Each roller cart is equipped with a time saving height  
adjustment mechanism so that the element can be  
readjusted in situ without opening the cover panels.

**Guide rails:**

Aluminium or steel, if desired already powder-coated with  
ceiling mounting bracket

## NüsingWall Premium 100 EASYmatic®

The Nüsing EASYmatic® system offers you **many advantages:**

- Fastest system on the market: EASYmatic® needs **only about 4 seconds** to retract and to extend the pressure seals.
- **Maintenance-free drive** with interference-free drive units proven and tested in the automobile industry (Porsche, Daimler Benz).
- Microprocessor-controlled system with a guaranteed contact pressure of 2000 Newton:  
makes **ground locks or rails obsolete** and assures that the **right contact pressure is always** built up to achieve high sound insulation values.
- **Automatic pull mechanism** to assure power transmission.
- Nüsing EASYmatic® is a **plug-in complete system** easily connected to the electric mains system.
- In case of mains power breakdown the **battery-operated emergency control** is included in delivery.
- The access to the dividing wall is for reasons of **maximal operating security** exclusively possible via a key-operated switch included in delivery.
- The **maintenance period** for the overall product is up to 5 years.





# Element types

## One system, unlimited possibilities.

We offer you a complete dividing wall system with all element variations. All elements are divided symmetrically or according to the customer's request.

### 1.) Standard element:

Standard element with upper and lower pressure seals, frontal handling with the crank handle

### 2.) Telescope element:

One element of the wall is manufactured as a telescope element to close the dividing wall. The element has upper and lower pressure seals in addition to a partial extendable aluminium telescope over the total opening height (for details please refer to page 22). The telescope is retracted into an internal housing, therefore the panel is the same width as a standard panel in parking position. The telescope element is furnished with the same surface as the dividing wall. The construction of the telescope element, assures minimum sound leakage. The handling of all telescope elements is done from the panel via a crank handle.

### 3.) Window element:

All elements can be executed optionally with a glass cut-out. For exact cut-out measurements please refer to our technical details.

### 4.) Wicket door element, single-leaf:

The movable wicket door element is fabricated with a circumferential steel frame as well as two lateral rails with pressure seals.

**Due to this solid construction no ground bar is necessary.**

The hinges and handles are manufactured in stainless steel. The door leaf possesses an adjustable lower pressure seal with automatic contact pressure mechanism. The door leaf locks automatically when moving the door panel.



1.) Standard element

2.) Telescope element

3.) Window element

4.) Wicket door element, single-leaf

#### 5.) Wicket door elements, double-leaf:

The movable wicket door elements have a circumferential steel frame with a partial rail and pressure seal. When retracting the elements they are locked above the doors. **Due to this solid construction no ground bar is necessary.** The hinges and handles are manufactured in stainless steel. The door leaf utilizes an adjustable lower pressure seal with automatic contact pressure mechanism. The door leaf locks automatically when moving the door element.

#### 6.) Full height door element:

The full height door is room-high and is fixed to the existing wall. The hinges and handles are manufactured in stainless steel. The door leaf utilizes an adjustable lower pressure seal with automatic contact pressure mechanism. A door stop element is needed.

#### 7.) Door stop element:

This element with upper and lower pressure seals utilizes laterally a rubber door-stop to firmly fix the adjacent full height door.

#### 8.) Corner element:

At a corner junction a corner element can be fabricated to the edge of the element. This corner serves as an attachment for other mobile dividing wall elements or to change the room division line. The element and the corner attachments are provided with upper and lower pressure seals.



5.) Wicket door elements, double-leaf



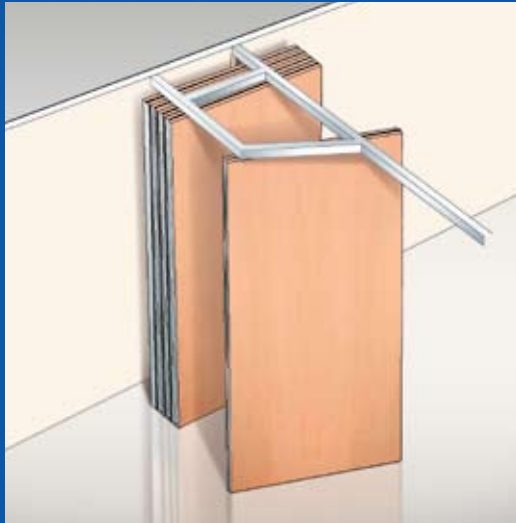
6.) Full height door element  
7.) Door stop element



8.) Corner element



# Storage possibilities



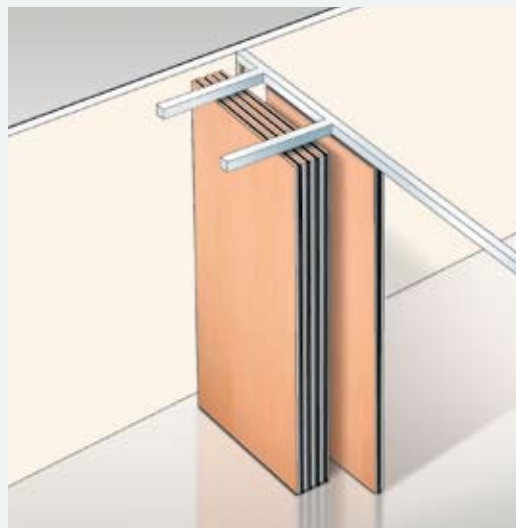
Z 1 / L



Z 2 / L



Z 2 / K



Z 3 / K

The illustrations show only a small selection of the different ways it is possible to stack the panels. There are many other possibilities depending only on the actual construction of the building.

Contact Nüsing at initial planning stage and we will show you the almost unlimited stacking possibilities that our unrivalled technology can provide.

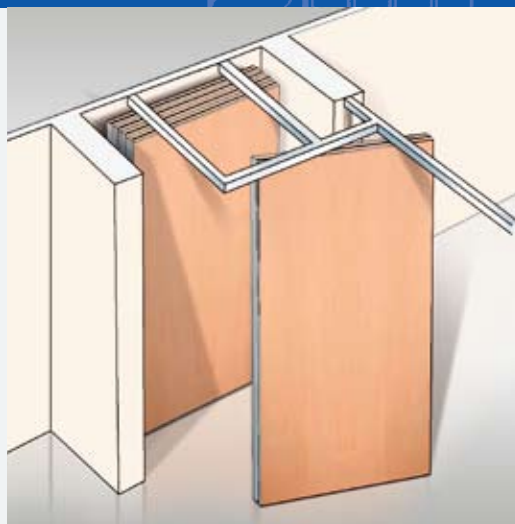
Special roller trolleys such as Guide Rollers, Cross Rollers, and Disc Rollers are available for all the various stacking systems.

Panel suspension can be from either one or two roller trolleys.

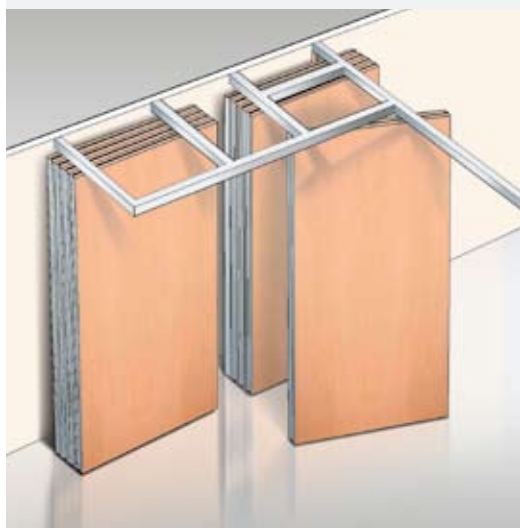
The stacking sections of track are fabricated by us off-site, and then delivered and installed by us. This guarantees accurately jigged fabrication and smooth running of the panels.



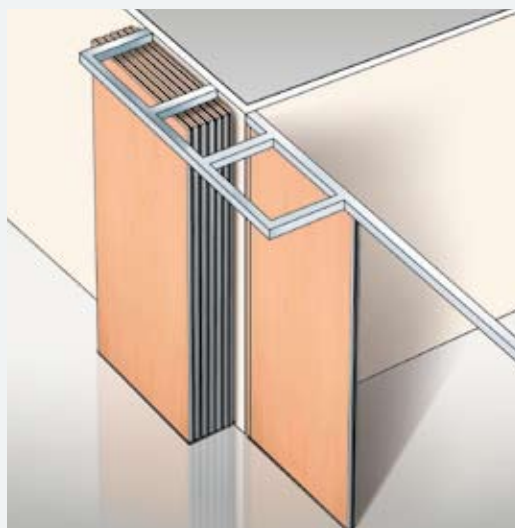
Z 4 / K



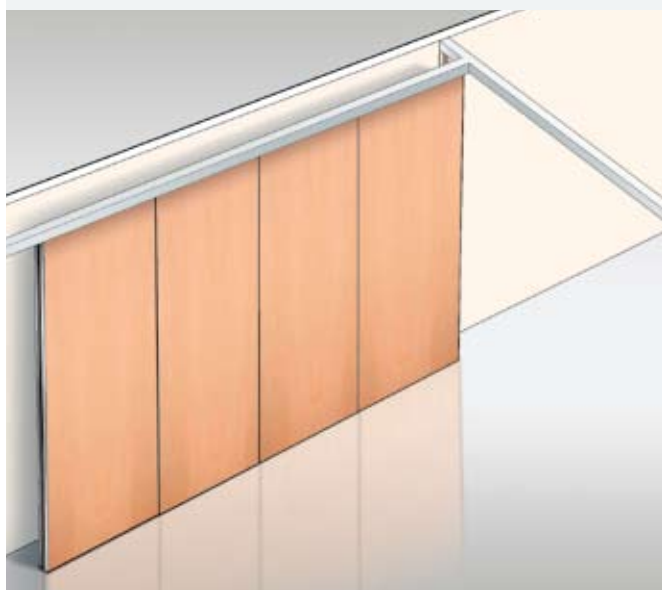
Z 4.1 / K



Z 5 / K



Z 6 / K



Z 7 / K



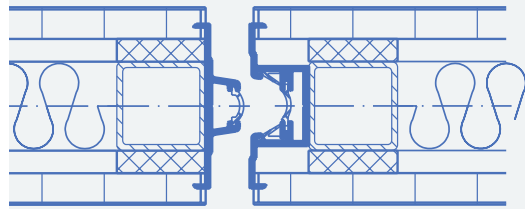
Z 8 / L

# Element edges / element connections

## Element edges

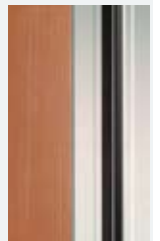
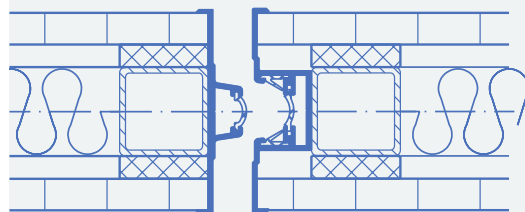
### Type KA ( Conceal Profile )

- Panels with concealed vertical aluminium profiles and veneered cladding edges. No aluminium profiles visible when wall is closed.
- Solid lipping available.
- 4mm vertical joint between the elements.



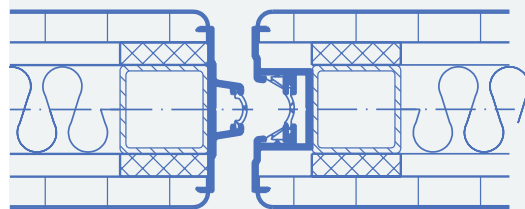
### Type UM ( Exposed Profile )

- Panels with exposed vertical aluminium profiles
- Vertical element edges protected by 8mm aluminium clamping profiles



### KA-Postforming

- Dependent on surface finish
- Vertical element edges rounded, when wall is in closed position no aluminium profiles visible.



## Element connections

### Aluminium profiles

- Tongue and groove profile E6/EV1 natural anodized with double vertical sealing system
- Tongue and groove profiles guarantee that the panels hang plumb.

### Painting profiles

Possible on request:

- powder-coating according to RAL or NCS
- painting according to RAL or NCS

### Magnetic strips:

- The magnetic strips' tractive power of 70 N/m ensures a keyed and force-fit element connection

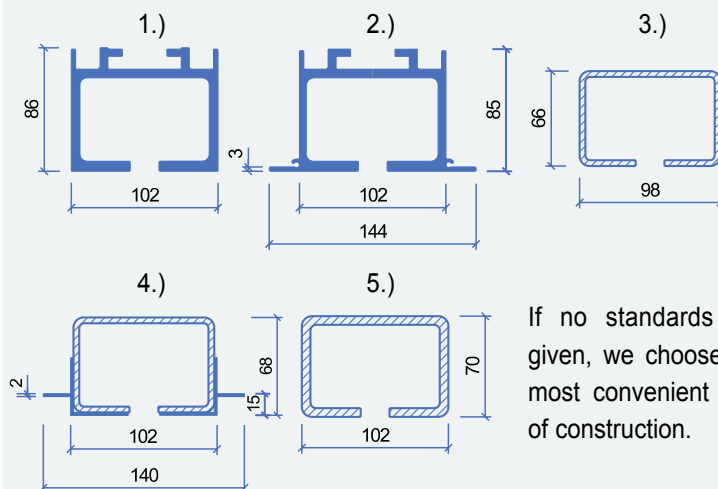


# Tracks / Suspension / Trolley systems

## Rails

- 1.) Aluminium RAL 9010 white powder-coated, 102 x 86 mm
- 2.) Aluminium RAL 9010 white powder-coated, 102 (144) x 85 mm with integrated mounting bracket
- 3.) Steel, galvanized, 98 x 66 mm
- 4.) Steel, galvanized, 98 x 66 mm with shifted mounting bracket at centre mounting
- 5.) Steel, galvanized, 102 x 70 mm

Guide rails by request in other RAL colours, powder-coated.



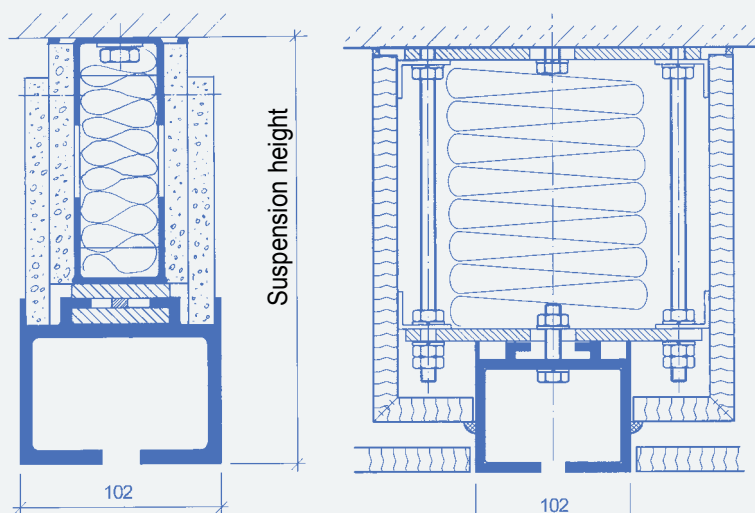
## Suspension

### 1.) Suspension with welded steel construction

Adjustments of height are directly executed on the dividing wall element.

### 2.) Suspension with threaded bars

Adjustments of height are directly executed on the dividing wall element and the suspension construction.



1.) Suspension welded with sealing

2.) Suspension with threaded bars - adjustable - with sealing

## Trolley Systems

Our trolleys are almost wear-free and are characterized by a high load bearing capacity.

Special roller trolleys make it possible to stack the panels off the line of the wall, problem free operation over crossings and around columns, panel stacking at less than 90° to the main line of track.

### 1.) Guide roller

For automatic panel turning with Z1 stacking

### 2.) Roller trolley

With ball support for L, T, and X track junctions

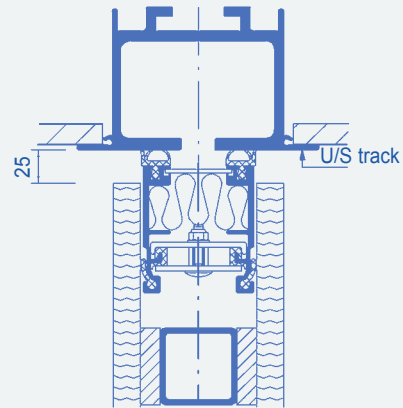


# Movable wall connections

## Always a good connection

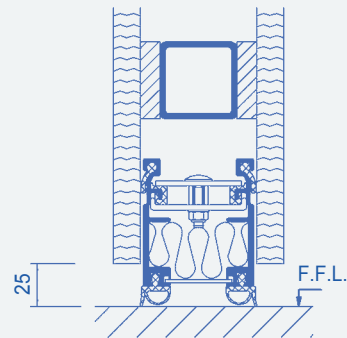
### 1) Upper connection

Aluminium guide track with roll guides. The distance between guide track and movable wall element is about 25 mm. The black anodized pressure seal presses with 2000 N/m against the guide track and thereby ensures ideal stability and sound insulation.



### 2) Lower connection

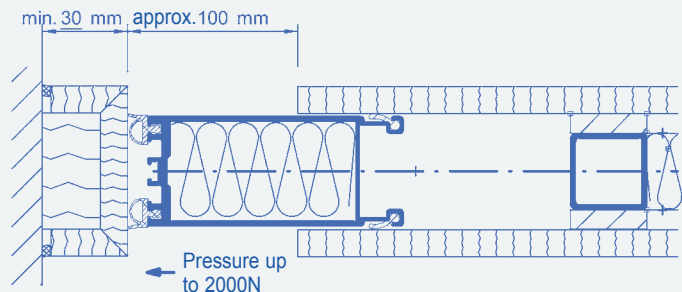
The distance between finished floor level and the movable wall element is about 25mm. The black anodized pressure seal presses with 2000 N/m against the floor and ensures ideal stability and sound insulation.



### 3) Wall connection

#### Wall pressure seal with extended telescope element

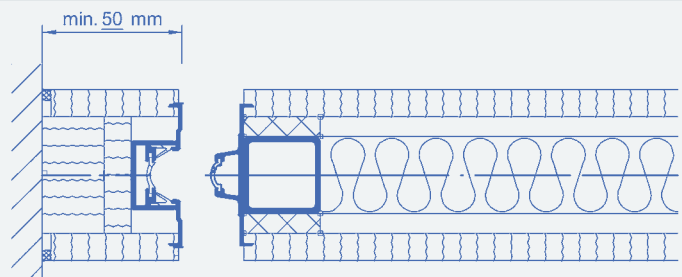
The internal aluminium telescope moves out of the element against the wall post. The wall post surface finish is the same as the movable wall element. Flush version also available. When retracted the telescope moves back inside the element. Therefore all elements are the same thickness for minimum stacking space.



#### Wall post element connection

The wall post serves as the receiver of the first movable wall element. The post is equipped with an aluminium fluted profile with magnetic strip. The proprietary seals and tongue and groove design ensure an excellent connection.

As a special design option this profile can also be embedded flush into the partition.



# Built with safety

## Test certificates

### Fire protection/smoke protection:

On request the relevant test certificates are available.

### TÜV (Technical Control Board) test certificate:

All Nüsing movable walls are built according to DIN 310.00/3.79 with an endurance test for over 3500 movements including telescope and wicket door elements.

### DIN-ISO 9001

### UH certificate of agreement:

According to building standard lists

### Impact safety

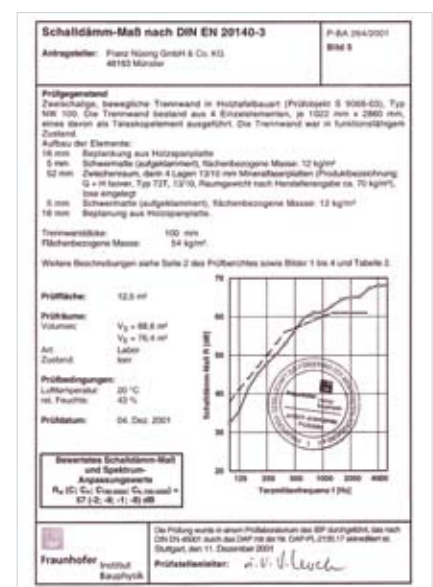
Certified according to DIN 18032/3 with test certificate

### Certificate of stability according to DIN 4103-1

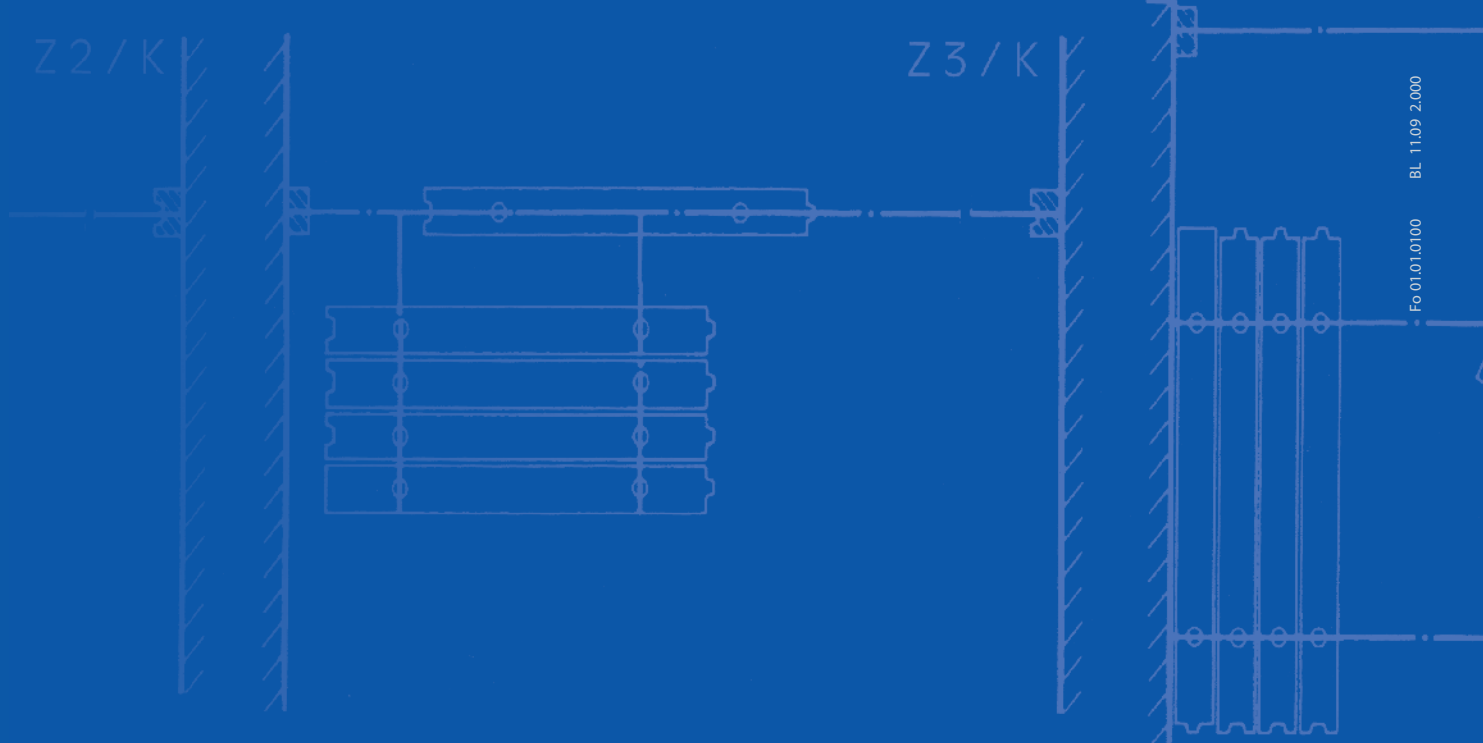
### Sound insulation DIN 20140-3

Rw P 41, 46, 49, 52, 55, 57, 59 dB

(at 59 dB element thickness 120mm)







The Nüsing product range  
offers you many possibilities:



#### Nüsing Premium 100 wall

- a movable wall with individual panels
- sound insulation up to  $R_w$ , P 59dB
- acoustic, smoke protection and fire protection versions available
- also available as Nüsing Eco wall



#### Nüsing Visioline glass wall

- glass movable wall with individual panels
- many different variations in décor (foil, paint, screen printing etc.)
- aluminium top and bottom profiles



#### Nüsing Faltina-wall

- solid double skin construction
- made-to-measure
- flat surface when closed
- sound insulation up to  $R_w$ , P 34 dB



#### Nüsing Flexi folding wall

- individual panels joined together by hinges
- access door standard
- glazed panels available
- sound insulation up to  $R_w$ , P 39dB

We reserve the right to make technical changes in line with our policy of continuous product improvement.



Franz Nüsing GmbH & Co. KG  
Borkstraße 5  
48163 Münster  
Tel.: 0251 780010  
Fax: 0251 7800127  
0251 7800145  
[www.nuesing.com](http://www.nuesing.com)  
[info@nuesing.com](mailto:info@nuesing.com)